

## EETI Mac Touch Driver Installation Guide

Version: 1.23.0925.a

Operation System: Mac OSX 10.10

Release Date: 02-25-2015

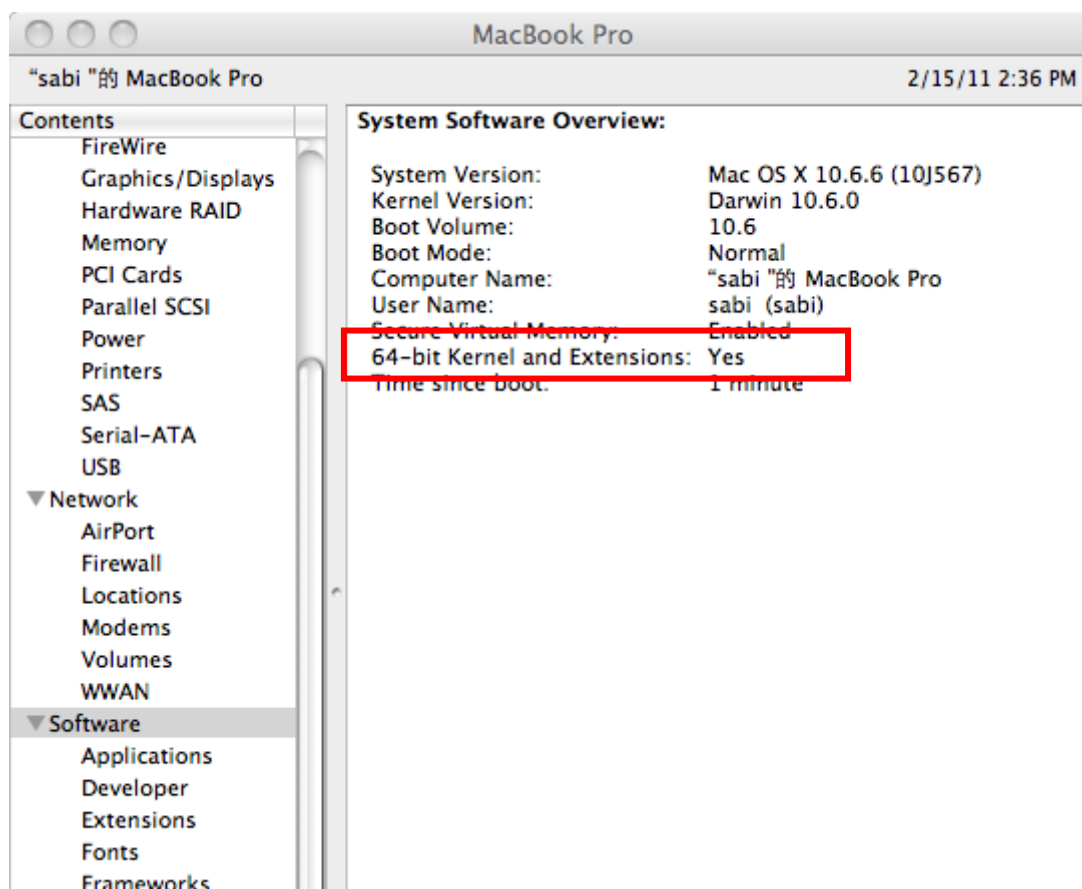
### Contents

1. Installation Procedure.....	2
2. eGalaxTouch Utility Setting .....	4
3. Uninstall Driver.....	7

Note: Please make sure you are running under 64-bit kernel extension mode as following:

Select Apple->About This Mac -> More Info and check your system setting.

If you are not running 64-bit kernel and extensions mode, please install 32-bit driver.



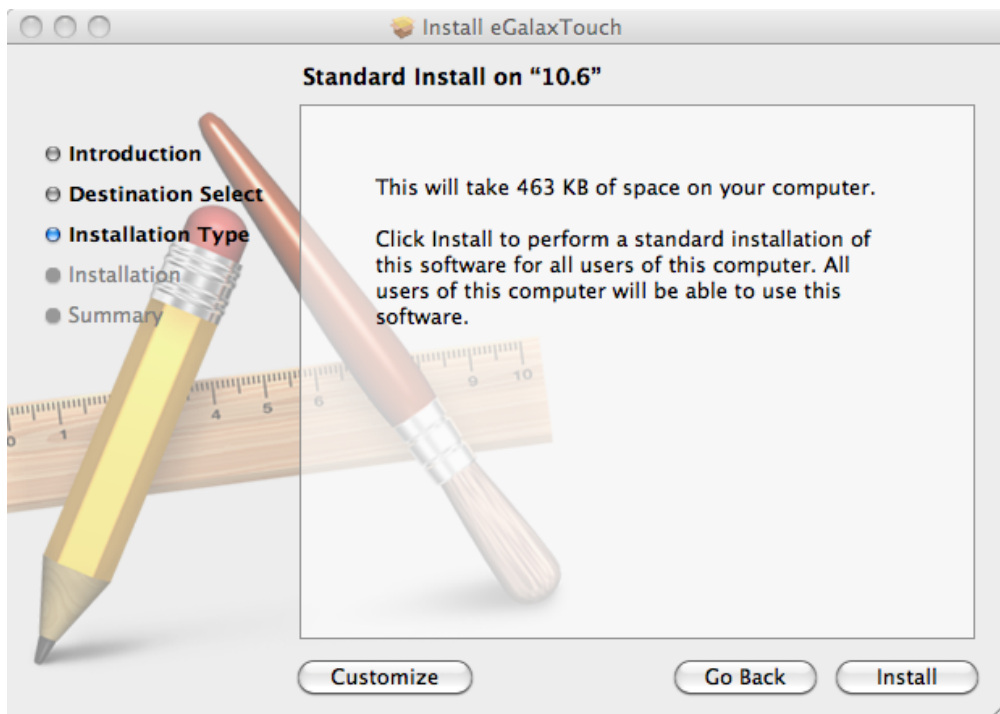
## 1. Installation Procedure

Please unzip the driver package and launch TouhKit Installation procedure.

### 1.1 Please unzip the driver package and launch TouhKit Installation procedure.



### 1.2 Select Install button to continue.

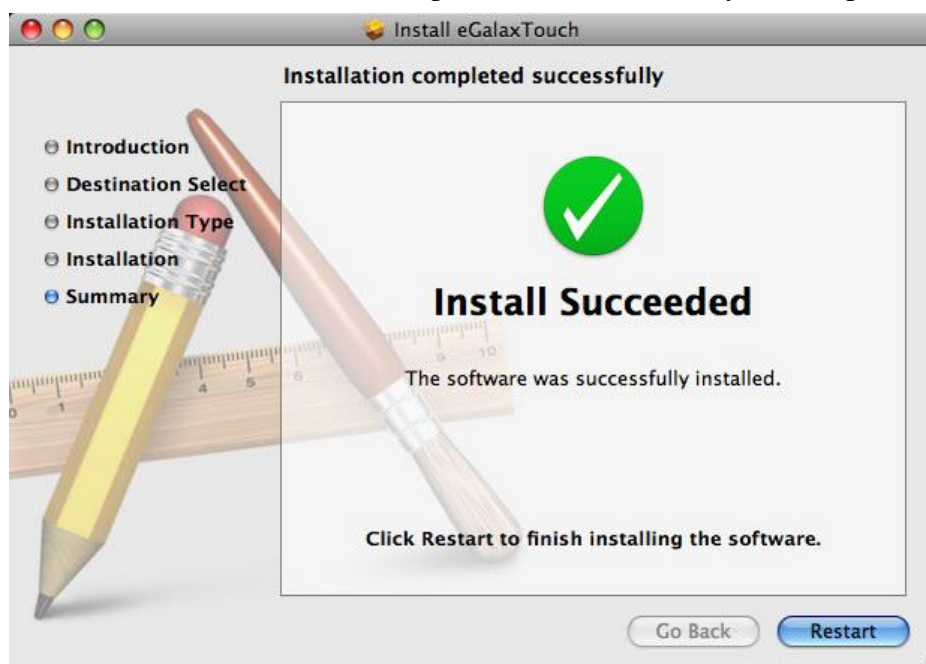


### 1.3 Select destination to install if you want to install on different hard disk, than

select Continue Installation.



1.4 When installation success, press Restart to restart your computer.

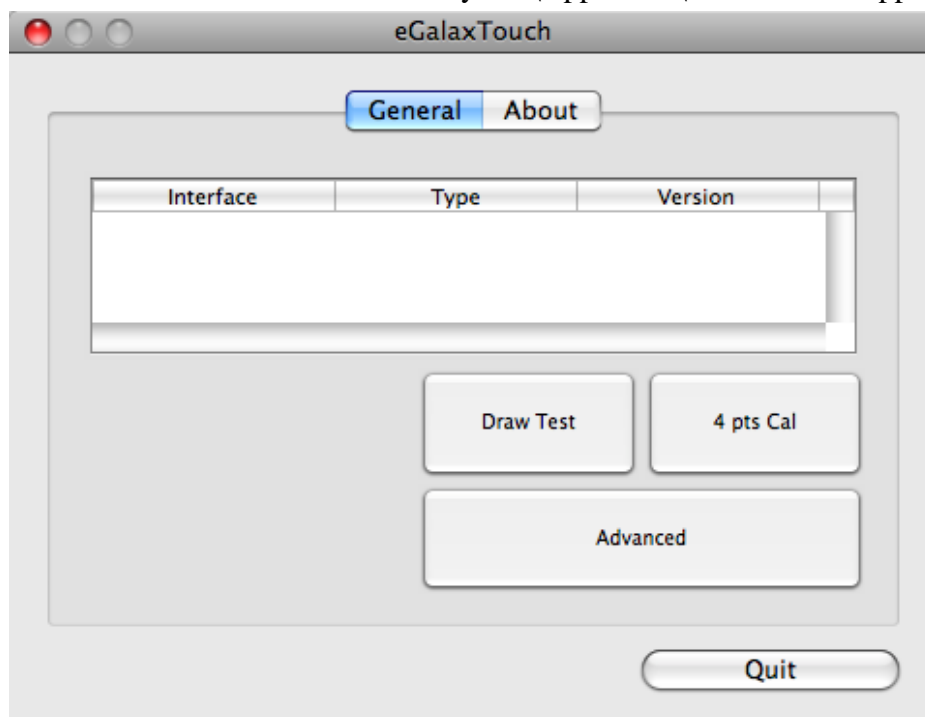


1.5 Restart Computer.

## 2. eGalaxTouch Utility Setting

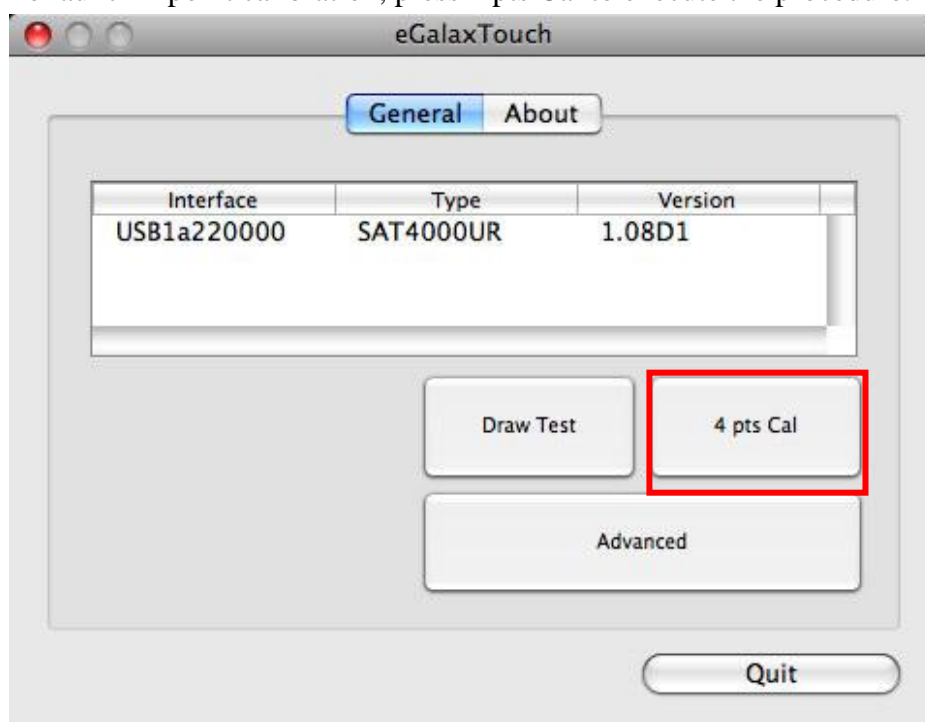
### 2.1 Launch eGalaxTouch

You can launch eGalaxTouch Utility via \Appliation\eGalaxTouch.app

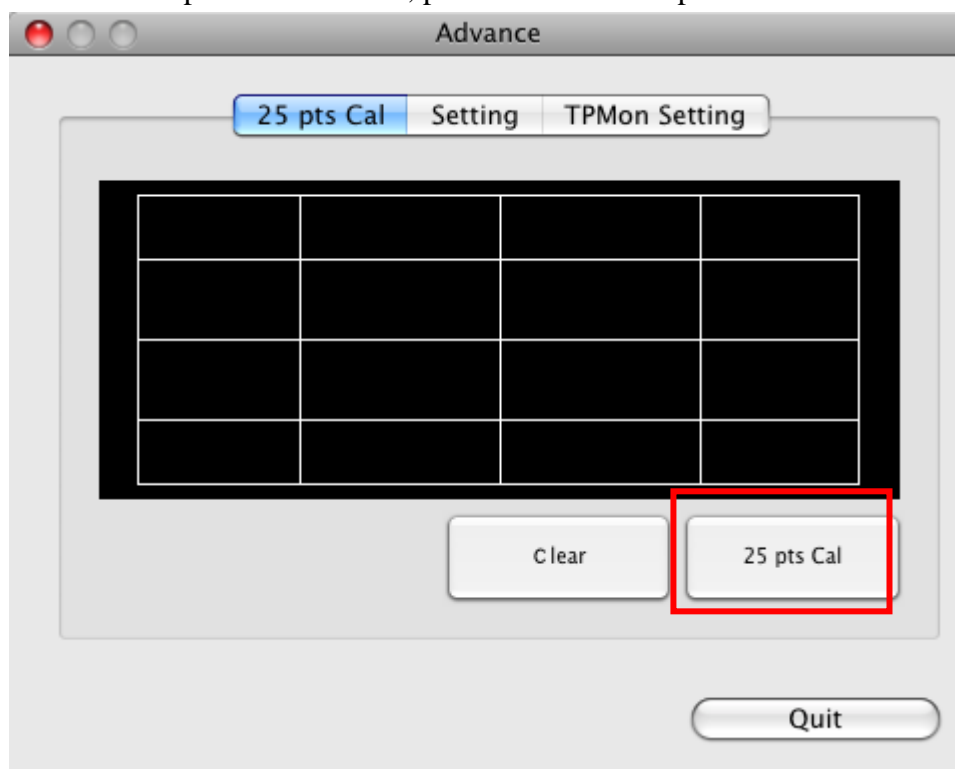


### 2.2 Calibration

To launch 4 point calibration, press 4 pts Cal to execute the procedure.

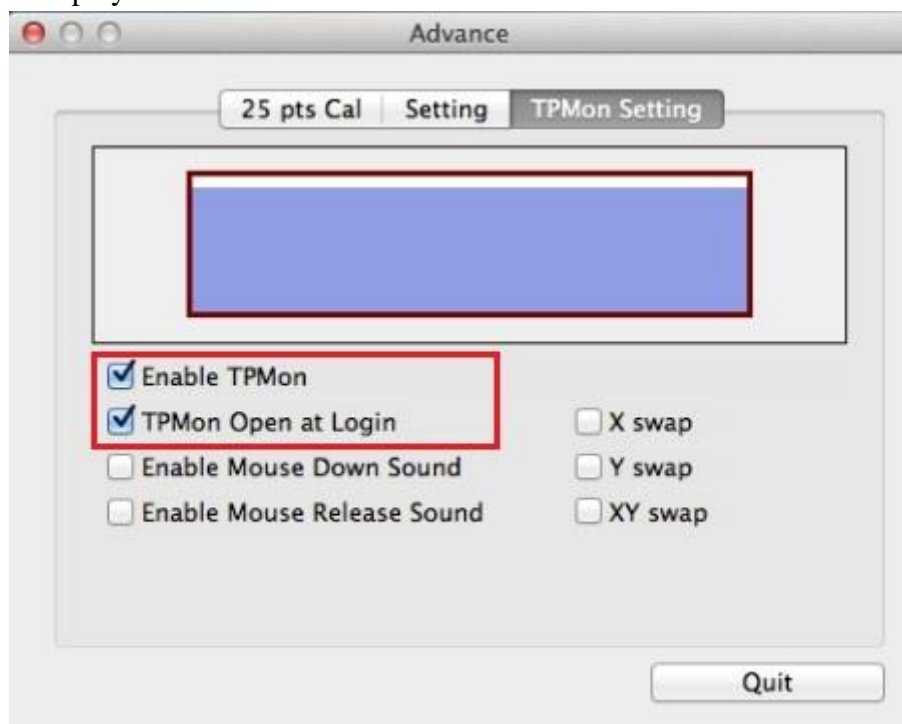


To launch 25 points calibration, press Advance->25 pts Cal



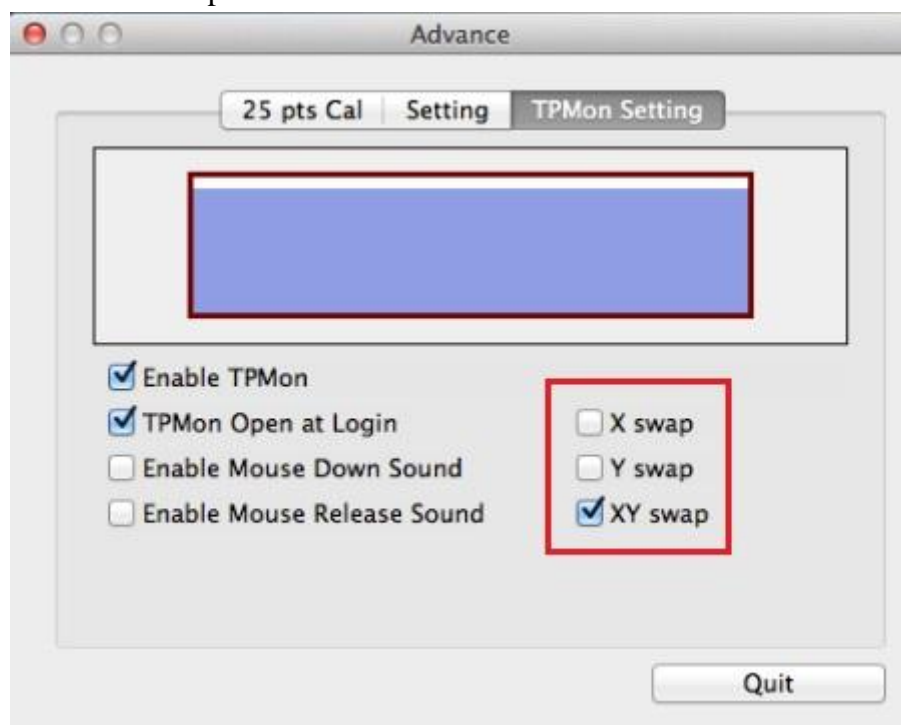
### 2.3 TPMon

We suggest that users enable TPMon Open at Login in eGalaxTouch utility. TPMon will monitor display setting changes and notify touch driver. Users use dual monitor display must enable TPMon.



### 2.4 Swap Coordinate

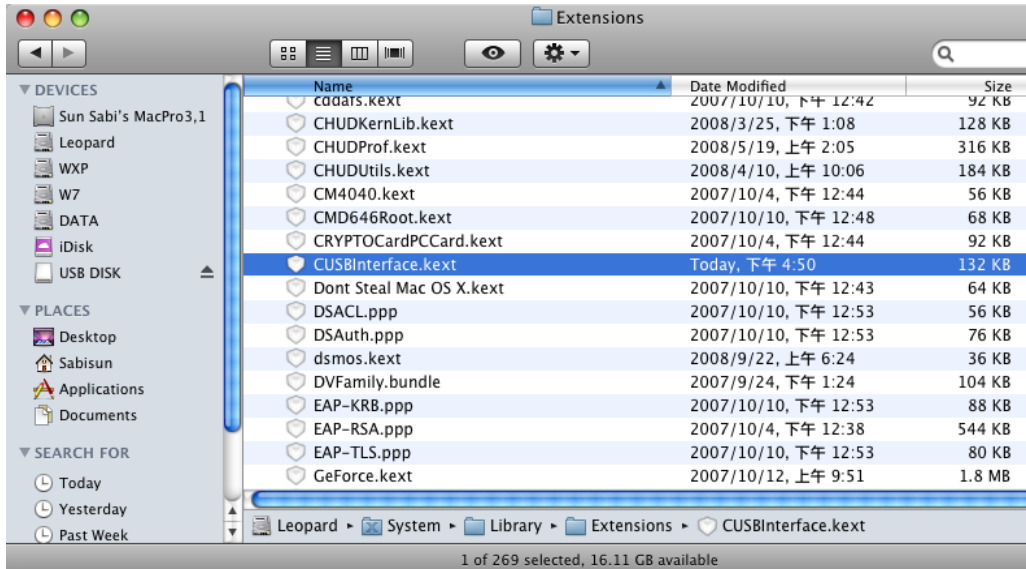
The function has to enable TPMon to record the coordinate state.  
Switch to TPMon Setting and "Enable TPMon" and "TPMon Open at Login",  
then click the swap check box.



### 3. Uninstall Driver

#### 3.1 Delete kernel extension file

Delete /System/Library/Extensions/CUSBInterfce.kext



#### 3.2 Delete eGalaxTouch Utility

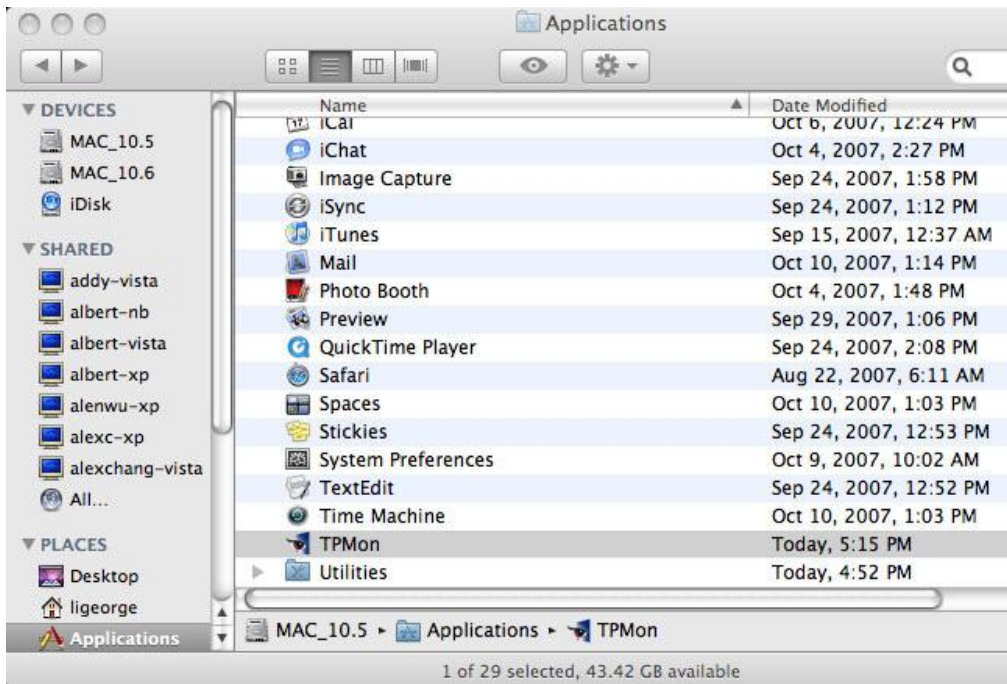
Delete /Applications/eGalaxTouch.app





### 3.3 Delete TPMon Utility

Delete /Applications/TPMon.app



### 3.4 Delete Install Package

Delete /Library/Receipts/cusbinterfaceroot.pkg

Delete /Library/Receipts/egalaxtouchroot.pkg

Delete /Library/Receipts/tpmonroot.pkg

